



Leeds Mental Health Needs Assessment published

*"A great starting point – useful to get a comprehensive citywide picture"
(workshop feedback)*

Vocal and lively representatives from over 20 organisations attended a session in July for the third sector to look in detail at Leeds' mental health needs assessment. Catherine Ward, Emotional Health and Wellbeing Lead for NHS Leeds, presented an overview of this important new document. It has been produced for the city as a whole to use, and pulls together existing information and data from a variety of sources. It covers the mental health of the adult population, including older people, although it doesn't cover dementia. It acknowledges that the information is incomplete and highlights some areas where further research is needed, as well as showing where there are gaps in services.

There are a number of recommendations arising from the research, with an overarching recommendation that the information in the report must be used: it is not an end in itself. Its purpose is to inform and contribute to decision-making to improve health and wellbeing in Leeds. The mental health needs assessment will feed in to the wider Joint Strategic Needs Assessment of health needs in the city.

At the workshop in July, participants split into groups based on the themes of the research findings: population mental health and wellbeing; suicide and self harm; secondary mental health services; employment, worklessness and financial inclusion and integrated mental health and wellbeing.

Concern was raised about the lack of BME and cultural analysis of the data and narrow health focus in some areas but generally the research was warmly welcomed and felt to be of great potential value to the voluntary sector. The report has also been welcomed by statutory agencies.

Anyone wanting to download a copy of the Leeds Mental Health Needs Assessment 2011 should go to <http://tinyurl.com/leedsmhna>, or you can search for the document on NHS Leeds' website: www.leeds.nhs.uk

Volition will be feeding back comments at the Joint Strategic Commissioning Group for Mental Health on 24th October, so let us know your views and comments. Plus, the Social Business Brokers will be running a workshop in October looking at opportunities for the sector to develop services, based on the findings of the mental health needs assessment. We will circulate details of this workshop to Volition members. Please get in touch with us for more information.

Inside

2 Around Volition & city

New members

Love Arts Festival

6 Strategic Groups

10 Reports

Suicide Prevention
Consultation

Local Health Profiles

15 Notice Board

Dementia and Learning
Disabilities Event

Living Well with Dementia
Event

Contact us at:

Suite 17D
Joseph's Well
Hanover Walk
Leeds
LS3 3AB

Tel: 0113 2421321
info@volition.org.uk
www.volition.org.uk

Registered Charity no.
1092126

**Deadline for
next edition of
Volition:
Noon, Thursday
3rd November
2011**

Around Volition and City

People

Goodbye to...

Penny Bainbridge, Cardigan Centre

Volition would like to wish Penny Bainbridge all the best for the future, as she has now moved on from working in Leeds. As well as making what their chair has called an "unparalleled contribution" to the Cardigan Centre, where

she had been manager since 1992, Penny has been tireless in her work for the sector as a whole. In recent years she had chaired the Third Sector Health and Wellbeing Network, including through a period of change and upheaval in funding of the sector. She advocated strongly for a community development approach to health improvement and was active in promoting this.

New Volition member: Feel Good Factor

Feel Good Factor is a health and wellbeing project based in Chapeltown. The organisation offers a variety of services and activities aiming to improve the health and wellbeing of the communities in Leeds by enhancing lifestyles and increasing access to opportunities. As part of our holistic approach to health at FGF we run projects which specifically promote emotional and mental wellbeing.

Currently we are providing art classes where the therapeutic aspects of art are used to improve wellbeing.

The art classes provide a safe learning environment enabling people to increase their confidence and self-esteem as well as developing their artwork and ideas, giving them the opportunity to join a formal art course at Leeds College of Art. There is a women only art class, and a mixed class.



So far the art classes have been well attended and the impact of art on mental wellbeing is clear. The confidence and self esteem of the individuals in the group has increased allowing them to take ownership of the class over the summer period, not only to carry on with their art work but also to actively support and encourage newcomers to get involved.

Earlier this year two of our students won awards, the Outstanding Achievement Award and Community Champion Award. Other students started volunteering for different

community groups and running art workshops and all of the students reported a positive improvement in their emotional and mental well being.

For more information contact Feel Good Factor on 0113 350 4200 or email office@fgfleeds.org

New Volition member: KeyRing Leeds

KeyRing's support is based on people living in their own homes but sharing their skills and talents with each other and with their communities. Our vision is for vulnerable people to be at the heart of their communities, sharing skills and talents for everyone's benefit. KeyRing exists to improve the life chances of our Members, who are the people we work with.

"I'm loving every minute of it"
- KeyRing Member

KeyRing believes that everyone has the right to live independently and make choices about how and where they live their lives.

We have a volunteer in each Network. The volunteer sees Members regularly and helps the group work together. The volunteer is like a good neighbour who will help out if

difficulties arise. Because the volunteer lives in the community, they know what's going on and are able to help Members make links.

We also have Community Support Workers and Supported Living Managers who make sure that Members get the support they need.



KeyRing believes that Community Connections are very important. We encourage people to make good links in their neighbourhood. Our Members have saved lives, campaigned for street lights and run neighbourhood improvement campaigns.
Tel: 0113 270 7775
email: enquiries@keyring.org

News from Leeds Mind

WorkPlace Leeds

We are delighted to announce that a consortium of Leeds Mind, Community Links and Touchstone have won the NHS Leeds tender to provide employment and job retention services. This will be working closely with clients referred from Leeds Partnerships Foundation Trust and the various IAPT services. We are recruiting new staff at the moment and will be launching in the autumn. In due course, the new service will also incorporate the existing Dove service. More news will follow soon but please contact Niccola on niccola.swan@leedsmind.org.uk with any queries.

Information for Mental Health website

Please can all Volition members review their content on this website at www.mentalhealthleeds.info
If your content needs to be updated please email niccola.swan@leedsmind.org.uk with the revised content or post a printed page with handwritten changes to Niccola Swan at Leeds Mind, Clarence House, 11 Clarence Road, Leeds, LS18 4LB. This is a really important resource for service users and comes very high on Google searches, so please do help to keep your content up-to-date.

New Volition member: Care & Repair Leeds, incorporating Leeds Directory



Care & Repair Leeds is the Home Improvement Agency for Leeds and has been running for 25 years. The aim of the agency is to promote independent living for older people, disabled adults and children and people on low incomes. It is accredited by Leeds Supporting People.

Services include **Disabled Adaptations** plus the **Prevention of Falls Service** which gives advice on avoiding trip hazards in the home. The **Health Through Warmth** scheme improves quality of life for vulnerable people suffering from cold and damp related illness by accessing cavity and wall insulation, heating systems and boiler repairs. Members of the **Housing Choices** team can discuss individual housing needs. The **Back to Back Home Improvements** service is available to homeowners, council tenants, housing association tenants and private tenants, providing advice on energy safety and home security. There is a **Handyperson Service** and a catalogue of independent living aids, **Support My Life**. To find out more about any of these services call Care & Repair Leeds on 0113 2406009 or go online: www.care-repair-leeds.org.uk



The **Leeds Directory** team operates within Care & Repair Leeds to help people find reliable, flexible services across the city, for example: cleaners, handypersons, gardeners, shopping services, plumbers, painters and decorators, pension collection services and personal care providers and many more services too numerous to list! They can also direct you to a wide range of support services such as befriending services, dementia cafes, luncheon clubs, leisure and art services, computer classes and benefits advice. It is used by social workers and care managers as well as by individuals, including people with personal budgets or direct payments, to find the right support.

All providers who offer services in the client's home or garden must complete a comprehensive quality assurance process called the "Green Tick" and providers of personal care must be registered with the Care Quality Commission. All Green Tick providers agree to provide services in accordance with the Leeds Directory Code of Good Practice whereby services are person-centred, reliable, flexible, affordable, easily accessible and culturally appropriate.

If you would like your organisation to be listed on Leeds Directory, contact the team or go online:
Tel. 0113 3918333, email: info@leedsdirectory.org and www.leedsdirectory.org

Adult Autism Strategy for Leeds

Helen Gee from Adult Social Care has been working with a multi agency group to develop an autism strategy for Leeds. The strategy is currently with various agencies for sign off. An earlier draft was discussed with Volition directors in April.

Autism is quite a common condition; approximately 1 in 100 people are on the autistic spectrum. They may have a wide range of needs and it is quite common for people with autism to have another condition as well. This means people with autism will be already using a range of different services (because they may well have additional other support needs), but they will not all need autism specific services for all of their needs.

The draft strategy suggests developing a partnership board where people with autism and carers can work together with professionals to guide the future development of services. A key issue is training – both awareness training to help services and individuals recognise and meet the needs of people on the spectrum and specialist training for people in specialist roles.

There is a need for an easily accessible local diagnostic and assessment pathway for autism. There are also various transitions from children's to adults' services

which need to be clear.

One of the key issues that came out from consultation with people on the spectrum is access to, and support from, universal services – such as employment, education, leisure, housing and health.

There is a big gap in information about services used by people on the autistic spectrum; this will include the mental health voluntary sector services which people on the spectrum may well be already accessing. This information needs to be collated. There was discussion at the Volition Directors' meeting about a range of issues which covered access, advocacy, self directed support, the implications for staff training, the needs of BME communities, carers' issues, access to crisis services and the potential for learning from other models such as the personality disorder network.

The strategy will be published as soon as it has been finalised, with a launch event hopefully towards the end of the autumn.

Contact: helen.gee@leeds.gov.uk
tel: 0113 247 6060

News from Social Business Brokers

Social Business Brokers is a Community Interest Company in Leeds. Our aim is to help people do good business by creating socially enterprising ways to deliver positive change.

The **Ideas That Change Lives Investment Fund** has a total of £100,000 to invest in social enterprises that support people in Leeds to live independently. We are particularly interested in services that people could buy with Personal Budgets.

For more information and to submit your idea, visit www.ideasthatchangelives.org.uk

As well as offering investment we will be running support events, starting with our Investment Fund briefings. You can view details of these and our other events by visiting our page on www.eventbrite (search for Social Business Brokers or the name of the event).

If you would like to chat about the fund please contact Gill, Jo or Rob on 0113 815 2024 or info@ideasthatchangelives.org.uk

One of the projects we are running at the moment is the **Personalisation - Made in Leeds Network**. The network is made up of local organisations that want to make it easier for people in Leeds to access services using an Individual Budget, and to encourage and support people to set up socially enterprising services that meet Leeds people's personalisation needs. To find out more about our network and other FREE events please visit our eventbrite page.

To find out more about the work we do, visit www.socialbusinessbrokers.co.uk

You can also contact us on 0113 815 2024 or info@socialbusinessbrokers.co.uk

Love Arts Festival

The Love Arts Festival is a seven week festival which is the culmination of eight years of developing links between arts, mental health and wellbeing through the Arts and Minds network.

We believe the arts have an important role in keeping us healthy, happy and feeling included in our communities. Our festival will explore the links between arts, creativity and wellbeing as well as recovery for people experiencing mental distress. We want to give everyone the opportunity to get involved in the arts in Leeds, especially people who may feel excluded because they experience mental health problems or a learning disability.

We are launching at an event on 27th September at the Howard Assembly Room and finishing on 16th November. Our programme features a wide range of events using a diverse range of arts forms, from theatre and visual arts through to music and dance, with many artists and arts organisations across the city. Many of our activities are free.

Our aspiration is that the festival will unite the city in improving understanding of mental health and challenging stigma. If your organisation wants to take part, you will



reach different audiences and be part of a larger conversation about arts and mental wellbeing. We will include your event in our marketing.

Love Arts is organised by Arts and Minds and Leeds Partnerships NHS Foundation Trust (LPFT) with support from Leeds City Council, Arts Council England and NHS Leeds as well as voluntary sector partners.

We need volunteers to help at these events. Whether you have previous experience of volunteering or have an interest in mental health, wellbeing and/or the arts, this could be a great opportunity for you. Volunteers will take part in events and performances to help set up, welcome people, hand out information and talk about our festival aims. Please get in touch with us at:

volunteer.loveartsleeds@gmail.com to express your interest in being involved.

Or ring Steph Lloyd on 07854 298965 or 0113 295 1043.

To find out more and for the festival programme go to www.loveartsleeds.co.uk

Fran Limbert, Love Arts

Group for carers supporting someone who uses drugs or alcohol

The issues faced by family members and carers supporting someone who uses drugs or alcohol can be complicated. They can have negative effects on relationships and on physical and mental health.

Issues of guilt, isolation and stigma within the community are areas Carers Leeds will take the time to help with. This may not stop the drug or alcohol use, but they can offer support to identify needs.

Monthly support groups are open to anyone to attend, as are the Carers Leeds drug and alcohol information

sessions. Family members and carers wanting to access support or information should contact the service to discuss individual needs.

Monthly support groups take place on the last Tuesday of each month 12 noon to 1.30pm and the last Wednesday of each month 5.30pm to 7pm.

The drugs education information session is on 28th September 12 noon to 2.30pm;

to reserve a place call Carers Leeds: 0113 246 8338.

Carers Leeds, 6 - 8 The Headrow Leeds LS1 6PT
email: info@carersleeds.org

News from Artlink

Artlink West Yorkshire has successfully completed a seven year capital build project. We moved back into our building in May and are settling into the beautiful new space. We have a lift to all four floors, and fully kitted out studio, a meeting room and multi-purpose workshop with access onto our Art Garden. Please come a look round at our Open Day on November 8th from 11.30 - 3.30pm and contact us if you are looking for rooms to hire out.

Tel: 0113 2431 005, email: info@artlinkwestyorks.org

Sylvie Fourcin, Artlink West Yorkshire

Strategic Groups

Joint Strategic Commissioning Group for Mental Health (JSCGMH) July 2011

Employment Support Service - NHS Leeds reported that the procurement process had been completed. Leeds Mind - in partnership with Community Links and Touchstone - were successful in a strong field. Their established links with mental health, experience with job retention and employment is expected to hold them in good stead. The service should start on 1st October with a three year contract.

Mental Health Needs Assessment – Presentations are being given to a number of organisations including Volition. Some areas of further work and additional recommendations have been identified. Key findings included defined timelines, for example, suicide audit recommendations. This item will be brought back to the October JSCGMH for detailed discussion.

LPFT Transformation - Lynn Parkinson gave a presentation on the LPFT Transformation programme currently underway. The programme represents a huge amount of work across all departments within the Trust to ensure that LPFT is positioned to face future challenges, to maximise efficiencies, to address clinical variation in practice whilst avoiding duplication, to ensure better outcomes and to enable integrating/streamlining services. The process takes a pathway approach beginning with considerable mapping of service user journeys and analysis of current inputs to care. The vision is to have a single (or limited) point of access. Clarification whether GPs had agreed to a single point of access requested. Lynn confirmed that this had yet to be agreed. In addition to following pathways development, the transformation programme will look at payment by results cluster requirements and assessment procedures.

(A session for Volition, Tenfold and LOPF members will be held on 11th October 10.00-12.30—see back page).

Self harm data and action plan - Richard Wall, NHS Leeds, discussed a paper on self harm admissions into LTHT and highlighted the proposed work of the Self Harm Group to analyse the data and to agree recommendations and interventions. Work would probably be focused on individuals who are admitted frequently, the general population, and current procedural protocols within LTHT. The group will explore the need for training of NHS staff working within LTHT or LPFT.

Reconfiguration of ASC Community Services - Tim O'Shea gave an update on the Adult Social Care Board proposal regarding Community Recovery Services. Substantial consultation and work expected around the future of day services is underway. The group discussed how eligibility criteria would be defined and how vulnerable groups not eligible for service would be catered for. The next step was agreeing planned service needs and how the service model would be defined. Tim agreed that consensus on what constituted eligibility would be a big step forward, however, the difficulty was more about making it work in practice. Sinead Cregan informed the group that local authority staff were attending the Citywide Care Planning Group. She agreed to bring work conducted around eligibility/FACS to enable discussion and joint agreement at the next meeting.

Public health – The government were originally going to publish a command paper, but have now produced a high level policy statement outlining the future of public health. Further guidance on timescales and next steps are awaited.

NHS Leeds Cluster with Bradford - It was noted that NHS Leeds would be clustering with Bradford (see page 9). It was unclear at this point in time whether there would be any implications for the current structures and workstreams. Executive posts would be affected but further clarity was required over the implications.

National suicide prevention strategy consultation - Consultation document has been published (see page 13). Responses due 11th October. Catherine Ward is the NHS Lead for developing the local strategy. NHS Leeds will be undertaking a suicide audit in March 2012. Currently national expectation is that these are undertaken every 4-5 years. However, this might move to an annual refresh process. Prevention falls mainly to the NHS rather than being the LA's core focus. However it was pointed out that this primarily public health function would be transferring to the local authority.

Care Programme Approach literature – an information booklet on CPA for service users produced by LPFT in consultation with the Citywide Care Planning Group. Copies are available from Volition on request.

JSCGMH continued.....

Out of hours crisis information - A request from the citywide Care Planning Group for multi-agency work to be undertaken to produce a composite leaflet on out of hours crisis support available in the city.

Common mental health problems pathway - Jane Williams, NHS Leeds, is establishing a cross sector leadership group for the psychological therapy pathway for common mental health problems in line with NICE guidance. Meeting from September.

Pip Goff, Volition

Update from Volition Directors

Volition's Board of Directors is our management body, made up of representatives from our member organisations (listed in the contact section of our website: www.volition.org.uk/contact-us.php).

They meet every month, and here we highlight some of the issues they have discussed at recent meetings, with other issues being covered in the JSCGMH report. For more information on any of these items, or for a copy of minutes of meetings, please contact Volition.

Outcomes in mental health - A sub-group of Directors is working on this project, aiming to develop some sector wide outcomes and consider existing outcome tools and measures. A questionnaire was sent to Volition members, and a report is being prepared based on the information gathered. Lavinia Lubbock represented Volition at a national Mental Health Providers Forum event - Volition is clearly in line with current thinking.

Supporting People Mental Health Sector Review - A recommendation is now going to the Supporting People commissioning body in August having been deferred from June and July. Leeds Involving People and Volition organised service user consultation at short notice, which gathered useful feedback despite some very low attendances.

Day services development / factsheets - Volition contributed to ASC's factsheet listing open access services, to encourage people to think about alternatives to day services.

Commissioning Sinead Cregan - Adult Social Care and Jane Williams - NHS Leeds come to Directors' meetings every quarter to discuss current commissioning issues. At July's meeting Sinead outlined initial stages of the day services review – more on this in the report from the JSCGMH opposite. Directors asked whether there was any information that could be shared around future budgets, to help organisations to plan ahead. However, there are no definite figures, but clearly difficult times ahead as ASC have challenging savings targets to meet.

Jane gave an update on some of the issues facing NHS Leeds (covered elsewhere in the newsletter). NHS Leeds' mental health priorities include:

- Work with LPFT on rehabilitation pathways; Volition has been asked to assist with undertaking the pathway
- Review the self-harm pathway
- Development of Common Mental Health Pathway Leadership Group – a multi-agency group established in line with NICE guidance.

Pip Goff, Volition

Third Sector Health and Wellbeing Network

The Third Sector Health and Wellbeing Network, hosted by Leeds Voice, is changing the way it operates. Network Coordinating Group meetings which currently take place on a six weekly basis will cease in favour of smaller steering group meetings. The steering group membership will consist of selected representatives holding Network Third Sector Reps positions on the various health partnerships and members who are specifically selected to sit on the group. Selections are made by process application against a person specification; anyone from a third sector organisation can apply. The Network will replace the regular coordinator group meetings with other means of communicating regularly with the membership e.g. e-newsletters, one-to-one and regular workshops and conferences.

For further information about the Third Sector Health and Wellbeing Network see: <http://leedsvoice.org.uk/networks-and-forums/third-sector-health-and-wellbeing-network/>

Contact Razwanah Alam, Network Coordinator tel: 0113 297 7928 or email: razwanah.alam@leedsvoice.org.uk to become a member of the Network.

Leeds Initiative Healthy Leeds event

The Healthy Leeds Partnership held one of its regular open meetings on 20th July, giving partners the chance to keep updated on some major developments that affect the city's health and wellbeing. The July event was very informative, covering the NHS Future Forum, Health and Wellbeing Boards, clinical commissioning groups and the Joint Strategic Needs Assessment.

Tom Riordan, Leeds City Council's chief executive, spoke about how he had been invited to join the NHS Future Forum, the group charged with listening and making recommendations during the government's pause on NHS reforms (see page 12 for more information). Tom was in the sub-group looking at the role of the new Health and Wellbeing Boards. He outlined some of the forum's recommendations: that the values of the NHS, set out in its constitution, should be protected; that clinical commissioning groups (previously known as GP consortia) are fundamental to the reforms, but must be supported; the timetable must be realistic; HealthWatch will be crucial in giving patients a voice; Monitor's focus will shift from promoting competition to partnership and patient involvement.

Tom also said that public health was not widely debated by the forum, because there was general agreement that it should be dealt with locally. There were questions about operational functions of Health and Wellbeing Boards, and who will support them. But there are opportunities for better integration of roles and services. The Future Forum will continue to meet.

Christine Farrar from Leeds Initiative gave more information about how Health and Wellbeing Boards are shaping up. Leeds are one of the pathfinder cities to set up a shadow board. Boards will produce a strategy based on the Joint Strategic Needs Assessment; promote joint commissioning and integrated services; involve local people and tackle health inequalities. At the time of the meeting we were unsure whether the voluntary sector will have a place on the Leeds' board, as this isn't a statutory requirement, although this has now been agreed. Christine also showed how the other partnership groups and boards would feed in.

Dr Dave Mitchell from Leodis and Dr Bryan Power from H3+ were representing all the current four clinical commissioning groups in the city (the groups might consolidate further). They have also applied to be pathfinders for early implementation. The commissioning groups work closely with individual practices – this is one of many innovatory areas that reform is bringing.

The groups are quite well aligned with the council's localities, but they need to be more closely matched. They have been working on governance arrangements, to make sure they have a clear route to the Health and Wellbeing Board. In terms of what they deliver, this will be measured using the Department of Health's outcomes framework. Key messages from the commissioning groups: partnership is crucial; their agenda is truly transformational, with the need for clinical leadership at every level.

Continuing the theme of partnership, Rachel Koivunen from Leeds Voice's Links to Commissioning project outlined recent work with the voluntary sector exploring the feasibility of forming geographically-based consortia. This has been supported by NHS Leeds, but is a continuation of work that has already begun: the sector are natural collaborators. The example was given of the emerging consortium Orion in east Leeds, which brings Zest, Space 2, Feel Good Factor and Shantona together.

Finally, there was a comprehensive presentation about the Joint Strategic Needs Assessment (JSNA), which will be the main process for identifying needs and building a robust evidence base on which to base local commissioning plans. As we had heard, it will be at the heart of the Health and Wellbeing Board's strategy.

Mental health is one of the emerging themes, and the Mental Health Needs Assessment will feed into the JSNA. In addition, mental health is a cross cutting issue (along with vulnerable groups and inequalities), as a review of other needs assessments found that mental health was a priority in all of them. Mental health issues highlighted by the JSNA:

- Support for carers' mental health
- Tackling isolation
- More signposting information needed
- Poor housing conditions.

Older people's needs were another theme, although more work is needed here – a comprehensive older people's needs assessment is needed. Information and isolation were also issues for older people.

The refresh of the JSNA will be finished by September, and it will feed into the shadow Health and Wellbeing Board in October.

A copy of the presentations from this event is available from Volition.

Gill Crawshaw, Volition

ASC's Market Development Forum

Adult Social Care's Partnership Think Tank has now become the market development forum. It aims to give providers information which will be helpful for business planning, keep commissioners in touch with the market, and to pull together a shared view on how services should develop. The forum is chaired by Dennis Holmes, deputy director at ASC, and members are drawn from the council, voluntary sector and independent providers.

At the meeting in June, Tim O'Shea, head of commissioning at ASC, outlined the council's health and wellbeing priorities for 2011-2015, which will need to be at the forefront of providers' minds when tendering for business:

- everyone lives longer, healthier lives
- everyone has the opportunity to improve their health
- people live safe and fulfilling lives in their own home
- everyone has active and independent lives.

Tim also explained ASC's priorities and key themes, which include reducing inappropriate hospital and residential care admissions (an estimated 30% of hospital admissions of older people in Leeds may be inappropriate); quality assurance and adult protection; improved information and advocacy; increased collaboration; and whole systems geared towards prevention.

In terms of commissioning priorities, these are mental health day services, older people's residential and day care, learning disability services and home care.

ASC are currently pulling together a market position statement, which will supersede the commissioning prospectus, setting longer term priorities. This is due to be launched in the autumn.

There was discussion of what this new forum might work on. Areas to look at in more detail will include workforce planning and development, including recruiting more younger people in social care; developing a common understanding of outcomes; data sharing, including data on outcomes and understanding and using the Joint Strategic Needs Assessment; communication, including better online forums and making the Full Circle newsletter more widely available.

The forum will meet quarterly, but hold open events, probably annually, for the wider social care providers.

Contact Volition if you would like more information about the forum.

Local NHS cluster

NHS Leeds, our local primary care trust (PCT), will have closer links with the neighbouring PCT, NHS Bradford and Airedale, as part of national NHS clustering arrangements. NHS Leeds will remain as a statutory organisation until it and all PCTs are abolished in 2013, but, by forming a single cluster with NHS Bradford and Airedale, there will be one board and executive team for both PCTs.

Clustering will lead to the 151 PCTs in England becoming 50 clusters to oversee the transition from the current system of PCTs to new clinical commissioning groups (CCGs – formerly known as GP commissioning consortia), which will be made up of GPs and other healthcare professionals.

Clusters are not statutory organisations in their own right, nor are they permanent features of the NHS, but they aim to sustain PCT capacity and capability during the transition period.

The cluster will oversee a number of shadow CCGs across Leeds and Bradford and Airedale. Locally, emerging CCGs are already working alongside NHS Leeds, preparing to take over some of its functions from April 2013. These new groups will have responsibility for commissioning healthcare for the local community, while continuing to address health inequalities.

Linda Pollard will chair the NHS Airedale, Bradford and Leeds PCT cluster. Linda, who has been the Chair of NHS Leeds since March 2009, will take up the post from 3rd October 2011. She will be responsible for leading the cluster in its role in supporting the development of the new commissioning system and for ensuring that during these changes, local people continue to receive the high quality accessible services they deserve.

Reports

Public Services White Paper

Open Public Services was published in July. The key policies include:

Choice and control

- Direct control – individuals should be given direct control over the public money spent on their behalf on services to which they are entitled, for example, personal budgets and direct payments.
- Existing independent champions for consumer choice, like 'Which?' and HealthWatch, should be agitators for choice in open public services.
- Redress for lack of choice - If choice is not available, there will be a means of redress for people. There will also be redress for service failure.
- Data to support choice –the government will explore how people are prompted about the choices available when accessing services (e.g. registering with a GP) and options for switching at intervals thereafter. We will consult on the best ways to do this. Government data will be open and accessible. They will consult on how to ensure all providers of public services, from all sectors, share information on performance and user-satisfaction.

Decentralisation of powers

- Local autonomy - local authorities will be more free from central government control.

- Neighbourhood councils - it will be easier to establish neighbourhood forums and other groups like parish councils.
- Community Budgets - every place will be able to use a Community Budget to pool funding at the local level to tackle complex social problems.

Opening services to new providers

- Decentralised commissioning - the government will consult on central government commissioning functions which could be decentralised to locally elected individuals and authorities.
- Consult on introducing open commissioning in central government services.
- New payment models - for centrally commissioned services. Providers from any sector will have the right to propose new ways to deliver services, with payments linked to results.
- Arrangements will be more transparent so users can hold management to account more easily.

This White Paper has been followed by a wide-ranging discussion with individuals, communities, public sector staff, providers and others with an interest in how public services are delivered.

Visit the open public services website at www.openpublicservices.cabinetoffice.gov.uk

Charity Commission report on consortia

Working in consortia helps charities increase their access to funding and build capacity through peer support and sharing resources and experience, according to research published in August by the Charity Commission. However, trustees are being reminded to be aware of both the opportunities and the risks associated with working in consortia that bid for and deliver public services.

Consortia for the delivery of public services: the issues for small and medium-sized charities looked at five consortia formed to deliver public services. The new research follows earlier work, which looked at charities working collaboratively and identified some types of activities with which smaller charities in particular experienced difficulties. The new research looks at the strategies and

approaches charities have used in order to participate successfully in consortia and explores issues that arise for consortia that were formed to help members tender for and deliver public services.

The report reveals that consortia working can result in a range of benefits for smaller charities in particular, with some stressing that consortia working helped them gain access to strong peer support networks and helped them cost their services properly and operate in a more business-like way. The report also includes a checklist setting out questions which charity trustees might find useful to ask themselves before deciding to join a consortium.

Available at: www.charitycommission.gov.uk

The voluntary and community sector in health: implications of the proposed NHS reforms

Written while the government was taking a “pause” and listening to views on proposals set out in *Equity and Excellence: liberating the NHS*, this is an excellent report from NCVO and the King’s Fund that looks at how reforms are likely to affect the voluntary sector, as service providers, commissioning partners and as a voice of communities.

It recognises the potential difficulties that organisations, particularly smaller ones, will have in operating in a competitive market, alongside private sector organisations and newly formed social enterprises that are emerging out of NHS provider organisations. There is considerable concern that the new system will be anything but a “level playing field”. Therefore, there is a need for support for the sector, as well as funding to support transition to the new system.

The voluntary sector’s knowledge of local populations must be recognised by commissioners, and new funding mechanisms should be developed that recognise social

value and the limited financial reserves of many smaller organisations. There is a need for training for commissioners on how best to work with the sector, and understand the important role organisations can play in tackling health inequalities. In addition, clinical commissioning groups must have a duty to engage with their local communities.

The report makes recommendations for three groups: national policy-makers; local bodies, including clinical commissioning groups and local authorities; and the voluntary sector. The sector is advised to take a strategic approach and consider collaboration and streamlining communications. New skills will need to be developed, including measuring and demonstrating value, marketing and data analysis. Some organisations will have this, but others will not.

The report is available on NCVO’s website: www.ncvo-vol.org.uk/health

Counting the Cuts

NCVO (the national council for voluntary organisations) has published this timely report of the impact of spending cuts on the voluntary sector. The key findings of their research include:

- Public expenditure is forecast to fall by roughly £20 billion in real terms between 2009-10 and 2015-16, a fall of 3%. The voluntary and community sector (VCS) will lose around £911 million in public funding a year by 2015-16. Cumulatively, the sector stands to lose £2.8 billion over the spending review period (2011- 2016).
- Funding from some parts of government is hit particularly hard – including some central government departments, local authority spending and capital expenditure. Cuts will be felt unevenly across the sector, and some parts of the sector will be hit harder.
- These figures mask the real impact of cuts as some central government departments, including parts of the NHS, may increase their funding for the sector.
- Responses to Freedom of Information requests show that half of all local authorities are making disproportionate cuts to the sector.
- There is significant variance in the way that different parts of government and local authorities implement cuts.

- The sector plays an essential role in preventative services. When investment is cut in this area, what appear to be cash savings often have considerable real costs in social and economic terms.

The report is available on NCVO’s website: www.ncvo-vol.org.uk

NCVO and partner organisations have started a new collaborative project, *Voluntary Sector Cuts*, which maps intelligence about voluntary groups experiencing reductions in public sector funding.

If you’re involved in an organisation which has been told its statutory funding will be reduced, you can be part of this work by sharing your story. Just fill in a simple form to share your experiences and the impact the cuts will have on the people who use your services. This resource shows evidence so far from nearly 500 organisations over six months. This snapshot translates as cuts worth over £76 million.

voluntarysectorcuts.org.uk

NHS Future Forum recommendations

(*excerpts from a summary by NCVO available at: www.ncvo-vol.org.uk*)

The Future Forum was set up to consider responses to the government's listening exercise about its proposed NHS reforms. The findings of the forum can be read as a summary or as a detailed report from each topic area covering: Choice and Competition; Public Accountability and Patient Involvement; Clinical Advice and Leadership and Education and Training. Search for "Future Forum on the Department of Health website: www.dh.gov.uk

Clinical Commissioning Groups

GPs, via commissioning consortia, should take responsibility for the health of local populations but they cannot do this alone. There must be a requirement for consortia to obtain relevant multi-professional advice to inform decisions and redesign of patient pathways. The commissioning governing bodies will meet in public; no decisions will be made 'behind closed doors'.

The timeframe of GPs commissioning by 2013 has been relaxed and they will commission 'when they are ready'. Central Commissioning Boards should commission on their behalf until new bodies are ready. The NHS Commissioning Board (original deadline April 2012) and HealthWatch England need to be set up as soon as possible.

Working together and becoming more integrated is the only way for the transition to work as well as ensuring that the final structure is efficient and operating with patient and public interest at its heart.

Competition and choice

Monitor, the independent regulator of NHS Foundation Trusts, was described in the Bill as having a role of promoting competition. This role has been diluted and will only promote competition as a tool for supporting improved choice for patients.

Any Qualified Provider and other policies have been described as increasing the chance for the private sector being commissioned and therefore the privatisation of the NHS. If not handled appropriately competition will threaten the core values of the NHS. The Any Qualified Provider plans have been delayed, until April 2012 (2012-13 will be a transitional year), although guidelines have started to be developed for providers and commissioners.

The Future Forum's report also mentions that personal health budgets need a stronger push.

The Prime Minister has accepted the 'core' changes outlined in the Future Forums report. Some of the changes in the government response require amendments to the Health and Social Care Bill.

The government's response to the recommendations is available at www.dh.gov.uk

Extending choice of Any Qualified Provider

In response to the NHS Future Forum's report, the government has committed to extending patients' choice of Any Qualified Provider, with phased implementation from April 2012.

Guidance is now available for commissioners, as well as current and prospective providers of NHS-funded services. It sets out how patient choice of provider will be extended during the transition, until April 2013, and outlines the principles governing the policy.

This includes reducing bureaucracy for the NHS and assuring the quality of providers, that commissioners

engage with patients locally to agree priorities for choice, and that there is competition on quality not price.

The overall aim of choice of provider is to drive up quality, empower patients and enable innovation.

The guidance itself, alongside resources to support onward communication about this policy are available on the Department of Health website:

www.dh.gov.uk/en/Consultations/Responsestoconsultations/DH_125442

Consultation on preventing suicide in England: a cross-government outcomes strategy to save lives

This document sets out a proposal for a new suicide prevention strategy for England with the aims of reducing the suicide rate and improving support for those bereaved or affected by suicide. The draft strategy brings together knowledge about groups at higher risk of suicide, effective interventions and resources available and places a new emphasis on family members. This involves working with relatives to prevent a vulnerable person taking their own life and better supporting those who have been bereaved following a suicide.

The following areas for action are set out in the strategy:

- Reduce the risk of suicide in key high-risk groups, which include people in contact with the criminal justice system, people with a history of self harm, people in the care of mental health services
- Tailor approaches to improve mental health in specific groups, which include looked after young people and care leavers, survivors of abuse in childhood, veterans, people who misuse drugs or alcohol, and lesbians, gay men and bisexual people

- Reduce access to the means of suicide including at high risk locations
- Provide better information and support to those bereaved or affected by a suicide
- Support the media in delivering sensible and sensitive approaches to suicide and suicidal behaviour, including encouraging responsible reporting, and working with the internet industry
- Support research, data collection and monitoring.

The closing date for consultation responses is 11th October 2011. Responses will inform the final strategy, due in early 2012.

You can find the documents, and complete the consultation online on the Department of Health's website: www.dh.gov.uk

Alternatively, you can contribute to Leeds' response. This is being coordinated by Catherine Ward at NHS Leeds. Contact her with comments on tel. 0113 843 5017, or email: catherine.ward@nhsleeds.nhs.uk

Healthy Lives, Healthy People: update and way forward

In July the government published an update to the public health strategy white paper: Healthy Lives, Healthy People.

The recent consultations on public health and the listening exercise for the Health and Social Care Bill demonstrated broad support for the strengthened focus on public health, for giving new public health responsibilities to local government and for the commitment to reduce health inequalities. But concerns were raised in relation to the role of the Director of Public Health in the new system, the need to avoid fragmentation and ensuring independence within the public health system.

The update report covers:

- the role of local authorities and the Director of

Public Health

- proposals for who is responsible for commissioning the different public health services
- the mandatory services local authorities will be required to provide
- principles for emergency preparedness and response.

A public health outcomes framework will be developed, along with detailed plans to underpin the transition of public health responsibilities to local authorities and the establishment of Public Health England. Both will take on their full responsibilities from April 2013.

www.dh.gov.uk/en/Publichealth/HealthyLivesHealthyPeople/index.htm

Strategic Health Authority clustering

Strategic Health Authorities (SHAs) in England will be clustered, as part of the package of NHS reforms. This means that a new body called NHS North of England will be created in the place of NHS Yorkshire & the Humber, NHS North East and NHS North West.

The chair of the new SHA will be Kathryn Riddle who is currently chair of NHS Yorkshire & the Humber. The clusters are expected to be in place by October 2011.

No Health without Mental Health briefing sheets briefing sheets for community groups and general practice

Following the publication of the Government's mental health strategy, No Health without Mental Health in February 2011, Centre for Mental Health has today launched two briefings in conjunction with the Mental Health Strategic Partnership (led by the Mental Health Providers Forum), aimed at general practice and community organisations.

No Health without Mental Health: a guide for community organisations explains how community groups and voluntary organisations can work together with services to promote good mental health and tackle the inequalities in

mental health service provision faced by marginalised and vulnerable groups.

No Health without Mental Health: a guide for general practice outlines the steps that primary care staff can take to ensure that mental health problems are identified early, and that people suffering from mental health problems are given support to stay in work. This briefing also underlines the importance of treating the physical as well as mental health of people with a mental illness.

Available at: www.mhpf.org.uk/forums/forum_posts.asp?TID=1122&PN=1

Local health profiles

The Department of Health has published health profiles for 2011, including Leeds. The profiles draw together information in order to give an overview of an area's health needs.

Included are charts presenting changes in death rates over a 10 year period, compared to rates for England, and a 'spine chart' health summary showing the difference in health between the area and the regional / England average for 32 indicators within five domains.

The health profile includes

- an 'at a glance' summary description of people's health in the area, which includes information on

locally identified priorities

- maps and charts showing how the health of the area compares to the national view and information on health inequalities within the local authority.

Health priorities in Leeds include tackling the inequalities gap, smoking and child health. For more information see www.leeds.nhs.uk

The health profile for Leeds 2011 can be found here: [www.apho.org.uk/default.aspx?](http://www.apho.org.uk/default.aspx?QN=HP_METADATA&AreaID=50331)

[QN=HP_METADATA&AreaID=50331](http://www.apho.org.uk/default.aspx?QN=HP_METADATA&AreaID=50331)

Optimising treatment and care for behavioural and psychological symptoms of dementia

This best practice guide from the Alzheimer's Society has been developed in consultation with an advisory group of leading clinicians specialising in dementia. It aims to provide evidence-based support, advice and resources to a wide range of health and social care professionals caring for people with dementia who have behavioural and psychological symptoms.

More than 90 per cent of people with dementia will experience behavioural and psychological symptoms as part of their illness and nearly two thirds of people with dementia living in care homes are experiencing these symptoms at any one time.

This causes distress to the individual, adds considerably to the stresses experienced by family and professional

carers and can result in serious risks to the person and others.

The guide has been designed to be a practical, informative tool to determine the best treatment and care for people experiencing behavioural and psychological symptoms of dementia, with an emphasis on alternatives to drug treatment. It outlines a simple and practical pathway to enable the implementation of the principles outlined in best practice guidelines (such as NICE guidelines) for the treatment in everyday clinical settings.

The guideline will be revised and updated, the latest version is available on the Alzheimer's Society website: www.alzheimers.org.uk



Notice Board



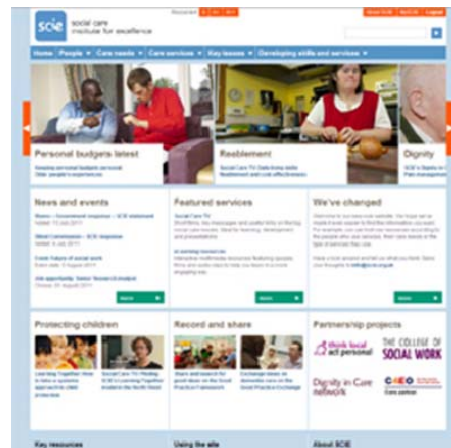
SCIE New-look website and ebulletin

Social Care Institute for Excellence have updated their ebulletin and website to make it even easier to find the information you want.

On the new site, you can look up information according to the people who use care services, the care needs that they support, or the type of service they use. You can also find information on the key issues in social care such as equality, integration and personalisation. The new Developing skills and services section brings together all SCIE's development resources for care managers, trainers and educators.

They would like your views on the website: www.scie.org.uk

Send comments to info@scie.org.uk



SCIE's address has also changed:

5th floor, 2-4 Cockspur Street, London SW1Y 5BH. The new switchboard number is 020 7024 7650.

Email addresses remain the same.

Crypt opens charity shop

St George's Crypt has opened its second charity shop in Leeds, in the former Co-op store at 40 - 46 Town Street, Armley. It is a large space giving the Crypt opportunity to develop the shop in partnership with others in the community. The Crypt hope that a number of its clients will benefit from volunteering and work experience at the shop, which will sell furniture as well as second hand clothes.

Opening hours are 9-5 Mon – Sat and donations to the store will be greatly appreciated.

GayLeeds.com

This website is a guide to "everything gay in the city of Leeds", and includes a useful section on advice and support.

Here you can find listings for health and support services, including counselling and LGB switchboard, plus a directory of local LGB&T groups, such as peer support groups, social groups and community organisations.

The website also covers events, jobs, news and has plenty of photographs.

www.gayleeds.com

Learning Disabilities and Dementia Looking to the Future

Friday 21st October - 10am-2pm, including lunch

Organised by Tenfold (the voluntary sector learning disabilities forum) in partnership with the Alzheimer's Society.

This event is an opportunity to explore themes across learning disabilities and dementia. There will be workshops and information.

Guest speakers include:

- Greg Mulholland, MP Leeds North West
- Michelle Tynan, Chief Officer, Learning Disabilities and Older People, Leeds City Council
- Dr. Oliver Corrado, Consultant Physician and Dementia Champion, Leeds Teaching Hospitals NHS Trust and Director of the West Yorkshire Foundation School Postgraduate Centre
- Sheena Kelly, Community Services Manager Learning Disabilities, Leeds NHS Partnership Foundation Trust

Booking is essential; email info@tenfold.org.uk



Notice Board



LPFT is changing: workshop for voluntary sector

Leeds Partnerships NHS Foundation Trust is currently engaged in a major transformation programme to improve services. Come and find out more, and have a say in improving everyone's experiences of LPFT services.

Tuesday 11th October, 10.00 am – 12.30 pm,
at HEART in Headingley.

The transformation programme aims to create a smooth journey through services for people who use them and their carers, and has been directly influenced by what they have said. It covers all LPFT's services – mental health, learning disability and specialist services - and includes

plans to remove age barriers in services, so that people are treated equally irrespective of their age. There are also plans to integrate mental health social workers with LPFT teams.

Voluntary sector workers can take this opportunity to influence the plans, as we often work in partnership or make referrals to LPFT, or we work with people who also use their services.

To find out more, or to book a place at this workshop, contact Volition on 0113 242 1321, info@volition.org.uk

Design for dementia challenge

The Design Council in partnership with the Department of Health is running an open challenge to help people with dementia and their carers live easier, better planned and more enjoyable lives. This includes services as well as products and software. Take part in this challenge and win a share of £360,000 plus professional support to make your idea happen. For further information see: www.designcouncil.org.uk/our-work/challenges/Health/Living-well-with-Dementia1/

Contact us if you are interested in being involved in this as Volition and Leeds Older People's Forum can support you to identify other members for your team.
Rachel Cooper, Leeds Older People's Forum
tel: 0113 244 1697
email: rachel@opforum.org.uk

Memories - living well with dementia

Leeds Older People's Forum members will be contributing to the **Memories - Living Well with Dementia** event hosted by Community Links at the Carriageworks on 8th October. The event marks the 30th Anniversary of Community Links and is timed to link with World Mental Health Day (10th October) and Leeds Love Arts Festival.

There will be a range of activities throughout the day, including singing and creative activities, and information about living with dementia. In the evening there will be a performance of a new play *1 Beach Road* by Turtle Key Arts. Book at www.carriageworkstheatre.org.uk

Alongside Community Links, Leeds Older People's Forum and the Carriageworks, groups involved include Alzheimer's Society, Leeds Adult Social Care Peer Network, Leeds Libraries (Leodis), Age UK, Yorkshire Film Archive, Leeds Partnerships Foundation Trust. A full programme will be on www.commlinks.co.uk and information will be circulated to Volition members. There will be both drop-in and bookable activities on the day.

Be a Voice of Change

A meeting for people who use services and carers

Have you or someone you care for had a hospital admission to the Becklin centre or Newsam centre in the last year? Would you like to share your experiences, good or bad? Do you have ideas or suggestions of how the service might be improved? If so, LPFT want to hear from you.

Come to an event at West Yorkshire Playhouse on 30th September. Food and beverages provided. For further information or to book a place please contact LPFT's Recovery & Social Inclusion Team on 0113 3056759 or Carers Team on 0113 2954444.

**Deadline for next edition of Volition:
Thursday 3rd November 2011
12 noon**