



self directed support news

Welcome to the first edition of our self directed support newsletter!

This is the newsletter about the Leeds self directed support (SDS) project, for all Adult Social Care staff and partners.

What is self directed support?

If you work in Adult Social Care you have probably heard about SDS. It gives people much more control over their own support by changing the way in which assessments are made and support is provided.

In the SDS model, a customer completes a self-assessment questionnaire which indicates their level of need and their desired outcomes.

They will then receive a budget based on the needs and outcomes they have outlined in the

questionnaire, and a support plan will be drawn up to show how this budget will be spent.

This enables people to choose the support which best suits their individual circumstances. It is designed to be more flexible than direct payments. Checks will be made to make sure the budget is being spent responsibly.

Some background

The work on SDS in Leeds started in January 08, with the Executive Board's endorsement of the principles of 'Putting People First'. This is the document which outlined the vision for the way adult social care services will develop in the future.



“Self directed support helps us have more control over our lives.”

SDS workstreams

Listed below are the current areas of work within the SDS project, and the name of the workstream leader. All the people named below work within Adult Social Care.

If you are interested in becoming involved in a workstream, contact the workstream leader.

| | |
|-----------------------------------------------------|-------------------------------|
| Consultation and involvement | Janet Somers |
| Communications | Mike Sells |
| Finance | Robert Russell |
| Care management | Jane Moran and Steve Bardsley |
| Support planning | Brian Ratner |
| Brokerage | Susan Morrell and Jim Traynor |
| DST and assistive technology | Liz Ward |
| Commissioning and contracting | Tony Callaghan |
| ESCR | David Sweeney |
| Employee development | Tracey Cooper |
| Transitions | Judith Kahn |
| Councillors' group | Bill Rollinson |
| ... plus an 'expert by experience' reference group. | |

Who's who in self directed support?

The **SDS Project Board** directs and monitors the work of the SDS project:

- John Lennon (Chair), Chief Officer, Access and Inclusion
- Tim O'Shea, Head of Commissioning, Adults
- Ann Hill, Head of Finance
- Cath Sullivan, Head of Human Resources
- Jessica Linville-Baud, Project Assurance Officer
- Jemima Sparks, Programme Manager
- Neil Colley, Project Manager, Corporate Efficiency Review team
- Andrea North, Head of Intermediate Tier, PCT
- Caroline Starkey, Deputy Manager, Leeds Older People's Forum
- Kevin Davey, ASC Project Manager

The **SDS Project Team** plans and undertakes the day-to-day work. **Kevin Davey** is the Project Manager, supported by Chris Wharton and Sheena Watson.

How to have your say

We're developing a suite of SDS web pages where people can have their say about SDS. Meanwhile, you can contact us using the email address and telephone number at the bottom of this page.

From January 2009, we'll be getting out and about to groups and forums to talk to people about SDS. If you would like us to visit your group please contact **Janet Somers** on **247 7443**.

Details of the communication and consultation events will be posted on the intranet as soon as they are confirmed.

The SDS newsletter is produced by the SDS Project Team and ASC Communications. If you would like to submit an article or find out more, call us on **0113 247 4785** or email **selfdirectedsupport@leeds.gov.uk**

Visit the **self directed support** pages on the LCC website (just enter 'self directed support' in the search field) for further updates.

For more on SDS and personalisation, see: **www.in-control.org.uk**.

Coming up ...

In the next newsletter we'll feature the 'expert by experience' reference group and an update on what the workstreams are doing.

What would you like to see in SDS News? Call us on 0113 247 4785 or email your ideas to **selfdirectedsupport@leeds.gov.uk**.

Service users to trial Leeds SDS model

January 2009 will be an exciting month as the SDS project moves on to phase 2 – Early Implementer, when people who use our services will work with us to trial the SDS process in Leeds.

The aim of the Early Implementer phase is to trial and test new processes and procedures to make sure they work well for customers, carers and staff.

Four social workers will work with around 50 service users from all age and user groups over a 6–9 month period to give them more choice and control by developing their support in line with the SDS model.

The cohort will be the first in Leeds to assess their own social care needs using our new self-assessment questionnaire (SAQ).

The newly developed resource allocation system will let them know the size of their personal budget. They will then plan their own support, focusing on achieving their assessed outcomes to ensure that they are healthy, safe and well.

The support plans will be agreed by area panels.

All plans will be considered by a range of professionals at a risk enablement panel. It is important that we take a consistent approach to checking and validating the support plans, and that any risks and safeguarding issues are addressed.

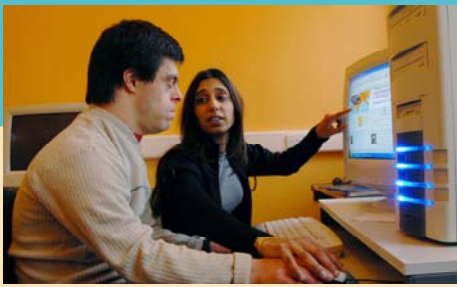


Reviews will be undertaken after the first and third month and an evaluation of the service users' experiences going through the SDS process will form part of the report which we will present to the Departmental Management Team in Autumn 2009.

Following sign-off by the management team and the council's Corporate Leadership Team the SDS model for Leeds will be rolled out to all new service users where appropriate, and for existing users upon review.

In addition to the main cohort, trials of a new contracting model (individual service funds) will also take place in 2009. This aims to give service users more control by allowing them to build a support plan with their provider, allowing for individualised packages to be developed and saving people the trouble of dealing with the paperwork themselves.

An evaluation of this model will also form part of the report written in Autumn 2009. This year will also see an increase in the pace of change towards personalising our services and we will use this newsletter to keep you up to date with our progress along the way.

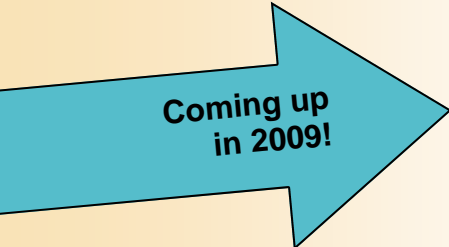


Workstream update

The 10 SDS workstreams have been looking at how the implementation of SDS will affect all aspects of Adult Social Care in Leeds. Here are some highlights of our work so far and a brief look at what's coming up ...



- Provider workshops were held to look at how roles may change with the introduction of SDS, how people will adapt to these changes and what training may be needed to help them. These are now complete and an action plan is being drafted.
- A self-assessment questionnaire (SAQ) and resource allocation system have been produced.
- Support plans were developed to help customers show how they will spend their budget to achieve their desired outcomes, and how this will be validated.
- In September a large conference was held for ASC staff highlighting the progress we've made so far and looking at where we are going next.



- There will be a general SDS launch for Leeds in January 2009. This will include the development of this newsletter and a suite of informative, regularly updated SDS pages on the LCC website. Plans are also in place to involve our partners and other key stakeholders in the work on SDS in Leeds.
- The SAQ has been completed and is now ready for trial with service users as the project moves to Early Implementer phase. The SAQ will be shared with partners, members of staff and service users for consultation.
- An options paper has been completed for board outlining proposed ways to validate support plans at Risk Enablement Panels.
- Work has begun on pricing in-house services.
- Work is ongoing to establish how service users will access assistive technology via the SAQ.
- A proposal for how the care management system will look under the SDS model will be presented at forthcoming board meeting.
- Further research has been undertaken consulting the IBSEN report. Planning for a follow-up workshop on brokerage to take place in January 2009.
- A workshop was held with Leeds Care Association to discuss challenges posed by SDS model.
- Plans being looked at for working with Keeping House to discuss how to encourage providers in the market under the social enterprise model.
- Work has been ongoing with the workstream leads around ESCR requirements. Mandate to commit resources passed by the Project Board.
- Some young people rising 18 who are in transition have been identified to be involved in the Early Implementer phase and work will continue to engage with this group.